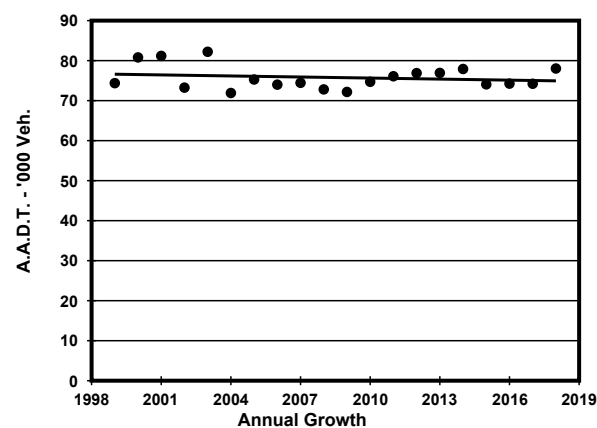
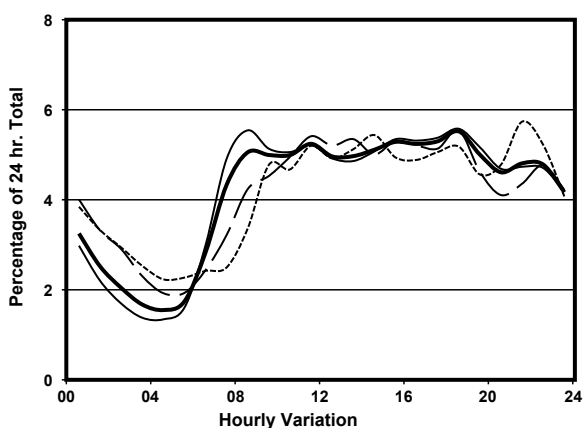
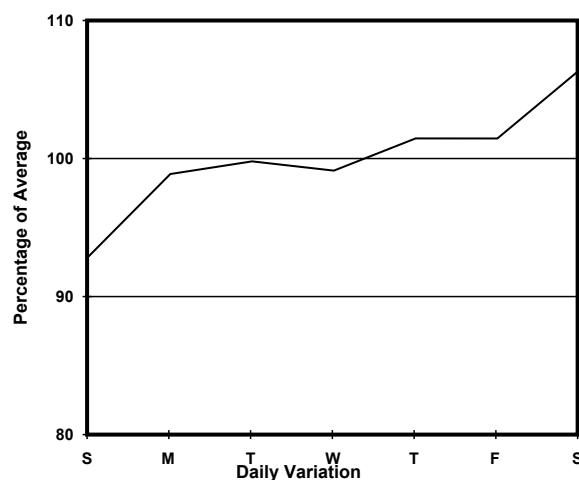
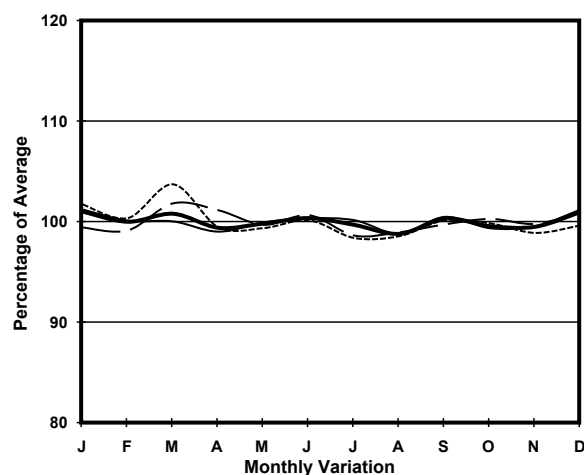


YEAR 2018
 COVERAGE (B) STATION 4213
 ROAD NETWORK MAJOR
 ROAD TYPE URBAN TRUNK ROAD

LINK EAST KOWLOON CORRIDOR <FO> (from MA TAU KOK RD to CHATHAM RD N)



1. TRAFFIC FLOW VARIATION AND GROWTH



— All day — Mon.- Fri. Sat. - - - - Sun.

2. TRAFFIC CHARACTERISTICS (BY DIRECTION)

Parameter	All - Day	Mon. - Fri.	Sat.	Sun.
SOUTH BOUND				
A.A.D.T.	27390	27300	28700	27230
R 12 / 24 - %	58.7	59.6	55.2	58.1
R 16 / 24 - %	77.2	78.5	72.7	75.7
AM Peak Hour	0700-0800	0700-0800	0900-1000	0900-1000
One-way flow at AM peak hour	1440	1630	1540	1420
T - % (AM)	-	14.1	-	-
PM Peak Hour	1800-1900	1800-1900	1800-1900	1800-1900
One-way flow at PM peak hour	1410	1410	1400	1450
T - % (PM)	-	9.4	-	-
Prop.of commercial vehicles - 16 hr.	-	11.9	-	-
NORTH BOUND				
A.A.D.T.	50640	51120	54650	45560
R 12 / 24 - %	62.2	63.8	61.2	54.8
R 16 / 24 - %	81.8	83.3	79.2	76.8
AM Peak Hour	0800-0900	0800-0900	0900-1000	0900-1000
One-way flow at AM peak hour	2530	2860	2230	2060
T - % (AM)	-	10.6	-	-
PM Peak Hour	1800-1900	1800-1900	1600-1700	1600-1700
One-way flow at PM peak hour	2900	2970	3220	2330
T - % (PM)	-	5.5	-	-
Prop.of commercial vehicles - 16 hr.	-	9.5	-	-

3. OTHER INFORMATION AND COMMENT

4. Vehicle classification and occupancy - Monday to Friday

Time		Class of vehicle									
		Motor Cycle	Private Car	Taxi	Private LB	PLB	Goods veh.		Non Fr. Bus	Fr. Bus	
							Light	M & H		SD	DD
0700-0800	Pro	6.8	33.3	22.1	1.5	0.8	18.5	8.8	4.7	0.0	3.5
	Ocp	1.1	1.3	2.1	3.2	2.8	1.3	1.1	12.1	0.0	26.8
0800-0900	Pro	6.3	44.1	23.5	1.1	0.4	13.4	5.9	2.2	0.0	3.0
	Ocp	1.0	1.2	2.2	1.3	6.6	1.5	1.2	16.0	0.0	40.2
0900-1000	Pro	3.5	41.4	23.7	1.1	0.2	16.9	6.7	2.4	0.0	4.2
	Ocp	1.0	1.3	2.1	2.5	1.0	1.3	1.1	5.2	0.0	21.7
1000-1100	Pro	4.2	31.5	26.0	0.9	0.6	24.8	5.5	2.8	0.0	3.8
	Ocp	1.0	1.2	2.1	1.5	1.0	1.3	1.1	11.0	0.0	17.8
1100-1200	Pro	2.4	34.6	23.5	1.9	0.0	26.1	6.0	3.0	0.0	2.5
	Ocp	1.0	1.3	2.3	3.5	0.0	1.3	1.1	16.3	0.0	24.4
1200-1300	Pro	2.2	42.2	22.2	1.9	0.1	20.5	5.7	3.3	0.0	1.8
	Ocp	1.1	1.3	2.1	3.6	1.0	1.2	1.2	13.9	0.0	27.8
1300-1400	Pro	2.4	28.8	27.6	1.5	0.2	24.0	10.3	3.0	0.0	2.1
	Ocp	1.0	1.2	2.2	2.7	1.0	1.4	1.2	16.8	0.0	28.9
1400-1500	Pro	3.2	36.4	23.7	1.3	0.1	24.0	7.5	2.0	0.0	1.7
	Ocp	1.0	1.3	2.1	1.8	1.0	1.4	1.2	18.9	0.0	27.2
1500-1600	Pro	2.0	37.7	25.7	1.4	0.0	22.7	6.6	1.7	0.0	2.3
	Ocp	1.1	1.2	2.1	4.0	0.0	1.4	1.3	10.0	0.0	21.5
1600-1700	Pro	2.7	35.6	26.5	2.0	0.0	22.6	5.4	2.9	0.1	2.4
	Ocp	1.1	1.4	2.0	4.9	0.0	1.3	1.2	13.2	1.0	25.0
1700-1800	Pro	5.7	42.7	24.2	1.4	0.3	17.3	2.5	3.2	0.0	2.6
	Ocp	1.1	1.3	2.2	1.9	11.7	1.4	1.2	9.1	0.0	36.7
1800-1900 Peak hour	Pro	7.0	51.4	24.2	0.9	0.3	9.5	1.3	3.0	0.0	2.4
	Ocp	1.1	1.3	2.2	3.4	17.0	1.3	1.3	19.6	0.0	61.7
1900-2000	Pro	5.1	50.9	26.5	0.3	0.4	9.2	2.0	3.3	0.0	2.4
	Ocp	1.1	1.2	2.2	1.7	13.0	1.4	1.2	15.8	0.0	45.7
2000-2100	Pro	2.8	48.6	32.2	0.1	0.9	8.0	1.8	2.8	0.1	2.7
	Ocp	1.0	1.3	2.2	1.0	11.0	1.4	1.3	14.9	1.0	27.7
2100-2200	Pro	2.4	48.7	32.2	0.3	0.6	7.5	2.7	3.1	0.0	2.3
	Ocp	1.3	1.3	2.2	2.0	6.6	1.5	1.5	17.2	0.0	27.4
2200-2300	Pro	4.1	39.5	43.3	0.0	0.6	7.2	1.1	1.7	0.0	2.4
	Ocp	1.1	1.2	2.1	0.0	12.2	1.3	1.2	10.6	0.0	30.7
16 hours	Pro	4.0	40.7	26.6	1.1	0.3	17.0	4.9	2.8	0.1	2.6
	Ocp	1.1	1.3	2.1	2.9	7.6	1.3	1.2	14.0	1.0	30.6

Legend

Pro. Proportion of vehicles in % (Sum may not add up to 100% due to figure rounding)*

Ocp. Average occupancy of vehicles including both driver and passengers*

M&H Medium and Heavy

***** All traffic data are collected from combined bounds except for one way traffic